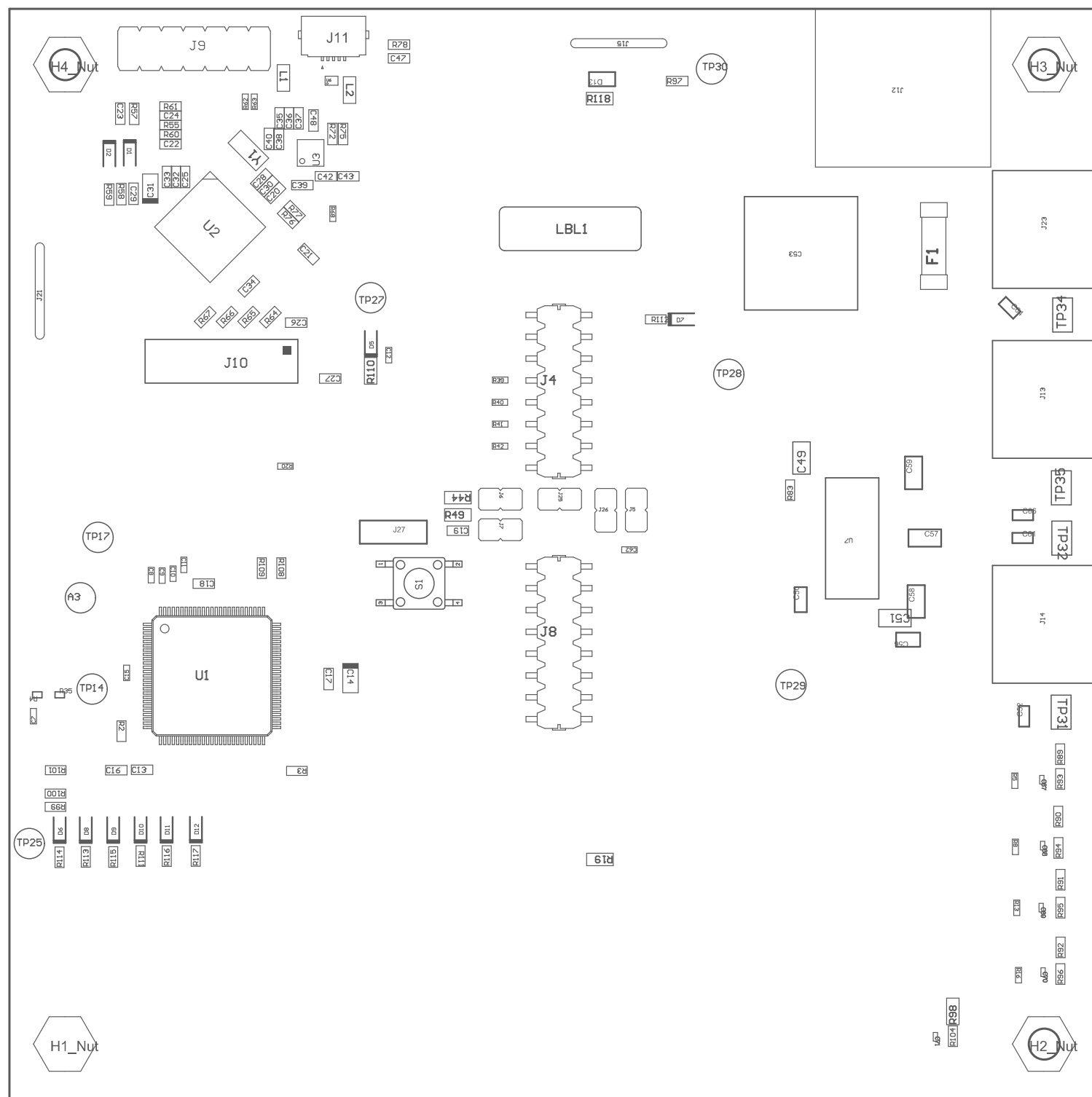
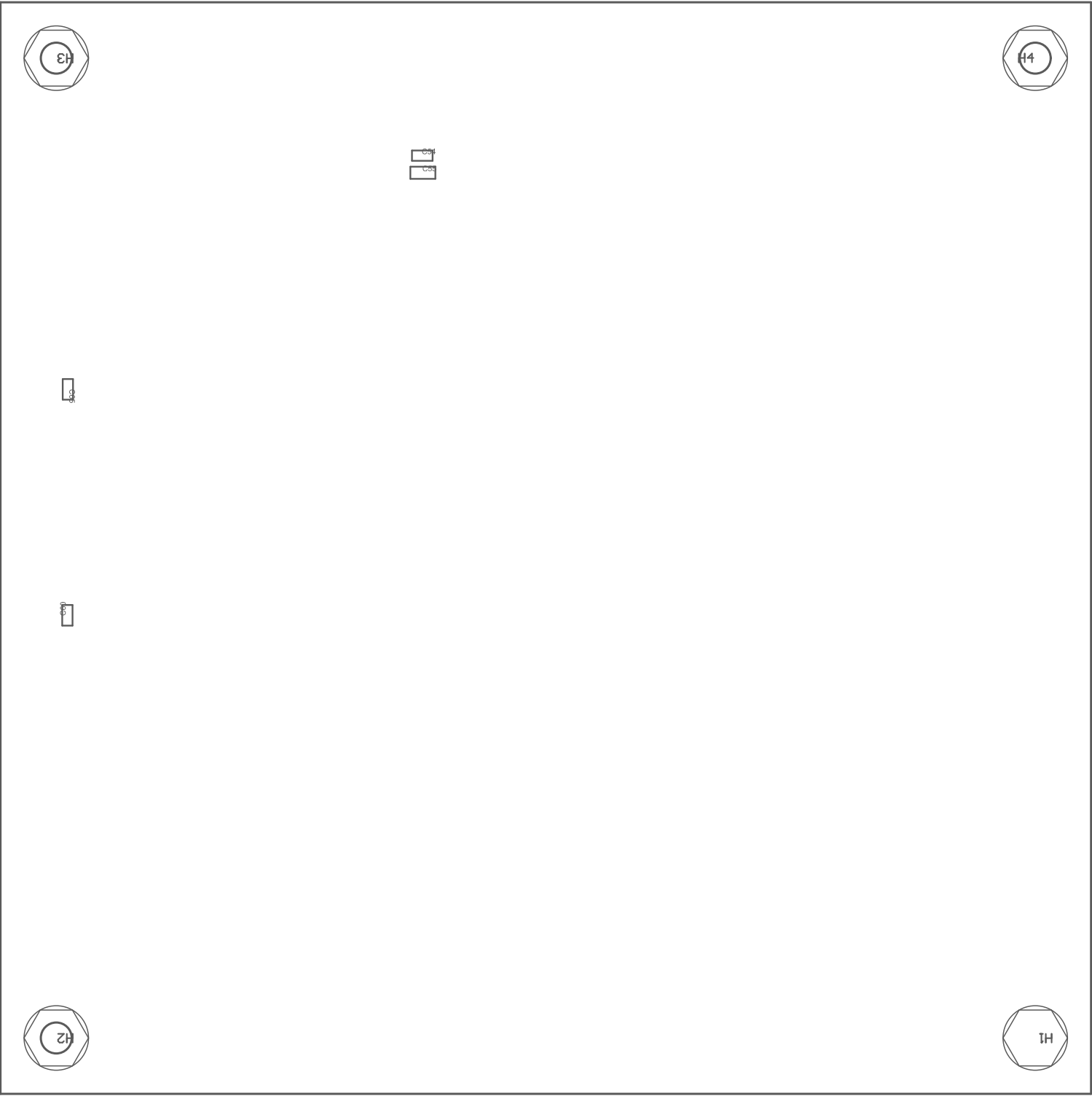


ZZ4 ■ These assemblies must comply with workmanship standards IPC-A-610 Class 2, unless otherwise specified.



PCB VIEWED FROM TOP SIDE	BOARD #: MD040	REV: E2	SUN REV: 1d5cd23cf125c4a53b0405025d5f3f0521a625da [Locally Modified]
	TID #: N/A		
PLOT NAME = Top Assembly Drawing	GENERATED : 8/11/2022 4:36:18 PM		TEXAS INSTRUMENTS



COMPONENTS MARKED 'DNP' SHOULD NOT BE POPULATED.  
ASSEMBLY VARIANT: 002



PCB VIEWED FROM BOTTOM SIDE	BOARD #: MD040	REV: E2	SUN REV: 1d5cd23cf125c4a53b0405025d5f3f0521a625da [Locally Modified]
	TID #: N/A		
PLOT NAME = Bottom Assembly Drawing	GENERATED : 8/11/2022 4:36:19 PM		TEXAS INSTRUMENTS